

Welcome to the HowsYourHealth Customization Screen

- 1 Your patients (or community respondents) will be able to respond to your custom options after entering the passcode when requested.
- 2 You may also automatically enter the passcode for them if they enter from a howsyourhealth link from your personal website. Use the address:
http://www.howsyourhealth.com/cgi-bin/start.py?Q0x=YOUR_PASSCODE

<p style="text-align: center;">Change your survey</p> <p>Add Up to 10 Subgroups for sorting information Modify or add 5 questions for those 9-18 Modify or add 5 questions for those 19-69 Modify or add 5 questions for those older than 70 Add an open-ended question CAHPS configuration Offer Pre-visit Medical Check* Planned Care Form</p> <p style="text-align: center;">Test my survey</p> <hr/> <p style="text-align: center;">Choose your summary</p> <p>Request Summary Data Ideal Medical Practices Certification Variables CAHPS, Race and Education Include Open-ended List Include Harms List</p>	<p style="text-align: center;">Choose your patient report</p> <p>Email action form / activate registry Preferred Output: HTML or TXT Get Patients from Registry Offer Special Disease Management</p> <hr/> <p style="text-align: center;">Infrequent options</p> <p>Update password Update or review contact info View, update, or renew subscription info Add request for personal identifier Offer Special Instructions on Action Form</p>
--	--

*Adds 10 minutes to complete

Change Your Survey

Add Up to 10 Subgroups for sorting information (for example Drs. A, B, C in you practice). Communities/practices that wish to have a much more extensive list of subgroups (such as employers, practices, hospitals, etc) should contact us.

Modify or add up to 5 questions (three are yes/no; 1 is three response, 1 is 5 response). You can change over time. Make sure you keep track of the data because the response automatically appear in your summary data base and can be censored by date)

- for those 9-18
- for those 19-69
- for those older than 70

Add an open-ended question such as “*what do you suggest our practice do to make you care better?*”

Add CAHPS. (Note- increased patient response burden). The consumer

assessment of health plans survey is a multi-item survey desired by some to look in greater detail at Access, General Communication, Doctor Rating and Doctor Communication about several problems, Staff Courtesy, Patient Race and Education, and Shared Decision Making. You can add these questions (but it will require substantially more patient time), randomly (to reduce response burden) or you can select only some elements. A separate report describes the relationship between these measures and HowsYourHealth measures. Bottom line...we recommend CAHPs be used randomly every year or so by practices that want to compare themselves to CAHPs national norms.

Offer Pre-visit Medical Check. (Note- Increased patient response burden).

When activated, patients who respond to question “are you visiting the doctor within 2 weeks” can be asked additional questions that provide a “review of systems” and reason for visit. These questions can increase both the efficiency and billing of office visits.

Planned Care Form. This patient completed form can be added to the patient ACTION FORM.

Planning for Health Changes

The change I want to make is: (be very specific, what, when, how?)										
My goal for the next month is:										
How convinced are you that this is the right work for you:										
⊗					☺					☺
0	1	2	3	4	5	6	7	8	9	10
Totally Unconvinced			Unsure		Somewhat Convinced		Very Convinced			Extremely Convinced
The steps I will take to reach the goal:										
1.										
2.										
3.										
The things that will make it hard to reach the goal:										
1.										
2.										
3.										
The ways I can overcome those things that may get in the way:										
My confidence that I can reach my goal:										
⊗					☺					☺
0	1	2	3	4	5	6	7	8	9	10
Not Confident At all		Unsure			Somewhat Confident		Very Confident			Extremely Confident

This form can be helpful when planning for better health and health care.

Choose Your Summary

The standard **summary** produces all variables for all respondents sorted by age, gender and chronic conditions. The best “scores” from the respondent perspective are obvious.

The Ideal Medical Practice certification variables focus on comparisons across practices for perfect care, communication, patient confidence with self-management, access, waste, continuity, fragmentation, and equity (by patient financial status). Measures are balanced by patient burden of illness.

CAHPS, Race and Education are summarized (if activated as described above).

Open-ended responses to questions (if activated as described above) are provided verbatim.

Verbatim responses provided for patients who personally experienced **health care related harms** in the past year. ([Read more](#))

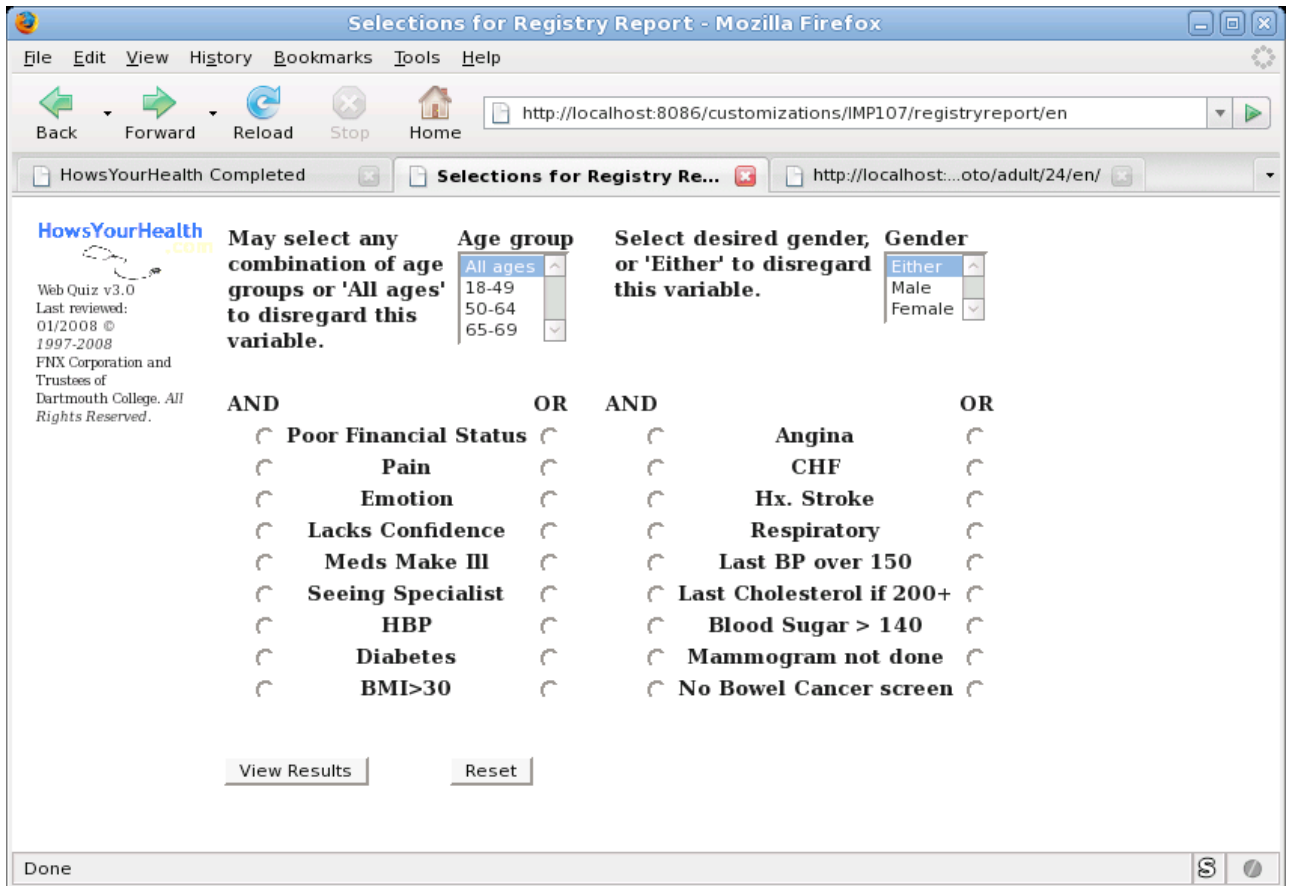
Choose Patient Report

HTML/TXT If information is to be electronically sent somewhere, the default format is HTML. However, TXT can also be chosen for import into an EHR.

Offer special health/disease management and registry. If you want to keep track of a specific subgroup of patients, you can invite them to participate.

Offer email transmission of action form and registry. Needs to be activated if you want your patients/respondents to either put information in the registry or email you their responses.

Get Patients from Registry. Requires a emailed agreement with the service provider to maintain HIPAA security. Patients/respondents enter their contact and personal information and HowsYourHealth adds the rest. Method for choosing variables is shown below. Patients/respondents are then sorted. A list of the patient/respondents can be downloaded for mailing lists, etc. New variables will be added as demanded by users. In 2009 we will add: smoker willing to quit, poor health behavior, has not created PHR, (geriatric: in fair or poor health).



INFREQUENT OPTIONS

Update password. If needed for security reasons.

Update or review contact information. So that you can be contacted about the status of your agreements with HowsYourHealth. We offer your information to no one.

View Subscriptions. You will be automatically contacted 1 month before an agreement is due. If you miss the deadline, you have a 2 week grace period.

Request personal identifier. Some users wish their patients/respondents to enter a specific number or code before beginning the HowsYourHealth survey.

Add to Action Form. The standard Action Form for the clinician can be modified to include expected actions for patients with different burdens of illness. (None, some, a lot).